



X Series Diesel Forklift Truck For Work In Container

with capacities of 5,000 to 10,000kg



Heavy Lift Forklifts

Factory site: 826 Mountain Hwy
Bayswater Victoria 3153

Tel: 03 9762 4965

sales@heavyliftforklifts.com.au
www.heavyliftforklifts.com.au

 Follow us on Facebook
 Follow us on YouTube
 Follow us on WeChat
 Available on the App Store
 Download "Hangcha Forklift" App

 ISO14001:2015
 ISO9001:2015
 HANGCHA trucks conform to the European Safety Requirements.

HANGCHA GROUP CO., LTD. reserves the right to make any changes without notice concerning colors, equipment, or specifications detailed in this brochure, or to discontinue individual models. The colors of trucks, delivered may differ slightly from those in brochures.

2022 VERSION 1.1 COPYRIGHT 2022/01

The World of Hangcha
SINCE 1956





Vehicle features

- / The vehicle is designed to have a sturdy exterior with novel streamlined curved surfaces and a prominent and innovative inside.
- / With a free duplex mast for the standard configuration and optional masts of multiple specifications for inside-container operations, the highly-adaptable vehicle has a low height and a narrow body appropriate to inside-container operations and meets the other requirements for operations in low and narrow environments.
- / With a heat dissipation system equipped with an integrated aluminum plate-fin heat dissipater, a standard hydraulic oil heat dissipater with a good heat dissipation effect, and an air duct with optimized design, the oil temperature of the torque converter, the water temperature of the engine and the hydraulic oil temperature can be reduced by 5°C~15°C.
- / With a ceramic-plated cavity, the gear pump has a doubled life and can meet the requirements of harsh operating conditions. By increasing the operation efficiency of the hydraulic system and the displacement of the gear pump, the lifting speed can be increased by 20%.
- / With a large-capacity torque converter and a port transmission with a life increased by 30% and fuel consumption reduced by 5%, the vehicle has a driving speed increased by 15%.
- / With the new ergonomic design and the mast with a forward tilt angle increased by 10° to improve operating safety.
- / Bosch-Yuchai high-pressure common-rail engine.
- / Active safety and IoT technologies independently developed by Hangcha Group and a standard smart module are used to enable a higher operation efficiency of the forklift and a lower use cost of the customer.

Vehicle warranty period

- / The warranty period is prolonged to 2 years or 4000 hours (except for vulnerable parts), where the expiring period will prevail.

Vehicle-mounted video system

- / The 8.5-10t vehicle is equipped with a front and rear cameras—equipped with a vehicle-mounted video system for the standard configuration to broaden the front and rear operating views.

LCD instruments with clear display

- / The newly developed LCD instruments have more comprehensive functions and more stable performance and can completely display important information such as the running status of the vehicle, engine failure, etc., so that the operator can more clearly know the status of the vehicle and the maintenance becomes easier.

New-generation integrated electrical box

- / A new-generation integrated electrical box with reasonable layout is used, which can be maintained and repaired easily and has better waterproof performance.

The vehicle can operate inside a container

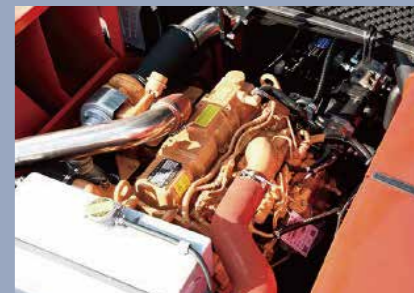
- / The vehicle has a low height and a narrow body appropriate to inside-container operations and meets the other requirements for operations in low and narrow environments.



A wide-view mast system is used, the opening of the mast is widened, and the dashboard in the cab is lowered, so that the front view of the driver is broadened significantly



The compact large-space ergonomic cab enables comfortable operations



With a high-pressure multiple injection technology, the Bosch-Yuchai high-pressure common-rail engine for the standard configuration has strong output power, less smoke emission, better cold start performance and energy consumption reduced by 10%



A plate-fin heat dissipater with high-performance fins is used to enable low oil and water temperature without water and oil leakage



The novel high-flow air filter with a safety filter cartridge to enable cleaner air intake and higher power of the engine

Standard Specification

- / Standard thin-cushioned seat
- / Standard fork
- / Hanging fork carriage (5-7t)
- / Skewer-equipped fork carriage without positioned (8.5-10t)
- / Standard load backrest (5-7t)
- / Container spec overhead guard
- / Rainproof overhead guard cover
- / 2.5m free duplex mast (5-7t)
- / 2.1m free duplex mast (8.5-10t)
- / Vehicle toolkit
- / Neutral gear safety switch
- / Drum brake
- / Traction device
- / Mid-position emission device
- / Vehicle-mounted video system (8.5-10t)
- / Electro-hydraulic steering
- / Fully hydraulic power steering
- / Vacuum-assisted braking (5-7t)
- / Power braking (8.5-10t)
- / Single front wheel (5-7t)
- / Steering wheel adjusting device
- / Cable-type stop brake
- / Anti-skid boarding step
- / Tilt cylinder jacket
- / Boarding handle
- / Large rubber pedal pad
- / Air filter
- / Rearview mirror
- / Engine hood gas spring
- / Hydraulic oil dipstick
- / Self-locking valve in the tilting fuel circuit
- / Port transmission
- / Speed limit valve in the lifting fuel circuit
- / Transmission oil fine-filter
- / Two-piece multiway valve
- / Hydraulic oil suction filter cartridge
- / Electric horn
- / Reverse buzzer
- / Combination headlight (LED)
- / Front operation light (LED)
- / Combination tail light (LED)
- / Water temperature meter
- / Engine hour counter
- / Oil gauge
- / Preheating indicator
- / Charge indicator
- / Engine oil pressure alarm light
- / Air cleaner alarm indicator
- / Oil-water separator indicator
- / Electric flameout
- / Accumulator pressure alarm (8.5-10t)
- / Maintenance reminder
- / Smart module
- / Bosch-Yuchai high-pressure common-rail engine

Options

- / Cab (heater/air conditioner)
- / Solid tire
- / Clean tire (white/green)
- / User specified color
- / Imported brake (5-7t)
- / Fuel tank cap locked
- / Double air filters
- / Lockable hood
- / Engine fan shroud
- / Blue light
- / Alarm light
- / Fire extinguisher
- / Rear LED operation light
- / Main power switch
- / Rear armrest with a horn button
- / Speed limit alarm device
- / Automatic gear shifting system
- / 2.4m wide-view duplex mast (5-7t)
- / 3.6m free triplex mast (5-7t)
- / 2m wide-view duplex mast (8.5-10t)
- / Special fork
- / Side shift fork
- / Independently-adjustable fork
- / Side shift adjustable fork
- / Paper roll clamp
- / Soft package clamp
- / Boom
- / Tie rod
- / Fork sleeve
- / Tire clamp



X Series 5.0-10t Diesel Forklift Truck For Work In Container Specification

| Distinguishing mark | HANGCHA GROUP CO.,LTD. | | | | | | | |
|---------------------|---|--|---------------------|----------------|----------------|-----------------|---------------|--------------|
| | 1.1 | 1.2 | 1.3 | 1.4 | 1.5 | 1.6 | 1.7 | |
| 1.1 | Manufacturer | HANGCHA GROUP CO.,LTD. | | | | | | |
| 1.2 | Manufacturer's type designation | CPCD50-XRG77-X | CPCD60-XRG77-X | CPCD70-XRG77-X | CPCD85-XRG77-X | CPCD100-XRG77-X | | |
| 1.3 | Drive | Diesel | Diesel | Diesel | Diesel | Diesel | | |
| 1.4 | Operator type | Seated | Seated | Seated | Seated | Seated | | |
| 1.5 | Load capacity/rated load | Q (kg) | 5000 | 6000 | 7000 | 8500 | 10000 | |
| 1.6 | Load centre distance | c(mm) | 600 | 600 | 600 | 600 | 600 | |
| 1.8 | Load distance, centre of drive axle to fork | x(mm) | 625 | 625 | 630 | 725 | 725 | |
| 1.9 | Wheelbase | y(mm) | 2300 | 2300 | 2300 | 2500 | 2800 | |
| Weight | 2.1 | Service weight | kg | 8100 | 8650 | 9355 | 10400 | 11900 |
| | 2.2 | Axle loading, laden front/rear | kg | 11450/1650 | 12890/1760 | 14730/1625 | 17240/1660 | 19970/1930 |
| | 2.3 | Axle loading, unladen front/rear | kg | 3830/4270 | 3780/4870 | 3885/5470 | 4660/5740 | 5300/6600 |
| Tyres, chassis | 3.1 | Tyres | | pneumatic | pneumatic | pneumatic | pneumatic | pneumatic |
| | 3.2 | Tyre size, front | | 355/65-15-24PR | 355/65-15-24PR | 355/65-15-24PR | 8.25-20-14PR | 8.25-20-14PR |
| | 3.3 | Tyre size, rear | | 8.25-15-14PR | 8.25-15-14PR | 8.25-15-14PR | 9.00-16-14PR | 9.00-16-14PR |
| | 3.5 | Wheels, number front rear (x = driven wheels) | | 2x/2 | 2x/2 | 2x/2 | 4x/2 | 4x/2 |
| | 3.6 | Tread, front | b10 (mm) | 1386 | 1386 | 1386 | 1430 | 1430 |
| | 3.7 | Tread, rear | b11 (mm) | 1460 | 1460 | 1460 | 1700 | 1700 |
| Dimensions | 4.1 | Tilt of mast/fork carriage forward/backward | a/β(°) | 10/12 | 10/12 | 10/12 | 10/12 | 10/12 |
| | 4.2 | Height, mast lowered | h1 (mm) | 2185 | 2185 | 2185 | 2180 | 2180 |
| | 4.3 | Free lift | h2 (mm) | 1048 | 1048 | 1048 | 1050 | 1050 |
| | 4.4 | Lift height | h3 (mm) | 2500 | 2500 | 2500 | 2100 | 2100 |
| | 4.5 | Height, mast extended | h4 (mm) | 3637 | 3637 | 3637 | 3226 | 3226 |
| | 4.7 | Height of overhead guard | h6 (mm) | 2240 | 2240 | 2240 | 2240 | 2240 |
| | 4.8 | Seat height | h7 (mm) | 1290 | 1290 | 1290 | 1455 | 1455 |
| | 4.12 | Coupling height | h10 (mm) | 430 | 430 | 430 | 455 | 455 |
| | 4.19 | Overall length | l1 (mm) | 4725 | 4755 | 4830 | 5413 | 5733 |
| | 4.20 | Length to face of forks | l2 (mm) | 3525 | 3555 | 3630 | 3913 | 4233 |
| | 4.21 | Overall width | b1 (mm) | 1750 | 1750 | 1750 | 1960 | 1960 |
| | 4.22 | Fork dimensions | s/e/l (mm) | 60×150×1200 | 60×150×1200 | 65×150×1200 | 80×160×1500 | 80×160×1500 |
| | 4.23 | Fork carriage DIN 15 173, class/type A, B | IV A | IV A | IV A | IV A | / | / |
| | 4.24 | Fork carriage width | b3 (mm) | 1532 | 1532 | 1532 | 1400 | 1400 |
| | 4.31 | Ground clearance, laden, below mast | m1 (mm) | 190 | 190 | 190 | 185 | 185 |
| | 4.32 | Ground clearance, centre of wheelbase | m2 (mm) | 270 | 270 | 270 | 235 | 235 |
| | 4.33 | Aisle width for pallets 1000 x 1200 crossways | As1 (mm) | 5075 | 5105 | 5140 | 5555 | 5865 |
| | 4.34 | Aisle width for pallets 800 x 1200 lengthways | As1 (mm) | 5275 | 5305 | 5340 | 5755 | 6065 |
| 4.35 | Turning radius | Ws (mm) | 3250 | 3280 | 3310 | 3630 | 3940 | |
| 4.36 | Internal turning radius | bs (mm) | 1215 | 1215 | 1215 | 1325 | 1395 | |
| Performance data | 5.1 | Travel speed, laden/unladen | km/h | 27/30 | 27/30 | 27/30 | 28/31 | 28/31 |
| | 5.2 | Lift speed, laden/unladen | m/s | 0.390/0.420 | 0.390/0.420 | 0.390/0.420 | 0.330/0.360 | 0.330/0.360 |
| | 5.3 | Lowering speed, laden/unladen | m/s | 0.440/0.310 | 0.440/0.310 | 0.440/0.310 | 0.350/0.330 | 0.350/0.330 |
| | 5.5 | Drawbar pull, laden/unladen | N | 65000/24000 | 65000/24000 | 65000/24000 | 75000/45000 | 75000/50000 |
| | 5.7 | Gradeability, laden/unladen | % | 35/20 | 33/20 | 30/20 | 21/20 | 21/20 |
| | 5.10 | Service brake | | Hydraulic | Hydraulic | Hydraulic | Hydraulic | Hydraulic |
| | | Parking brake | | Mechanical | Mechanical | Mechanical | Mechanical | Mechanical |
| Combustion-engine | 7.1 | Engine manufacturer/type | YUCHAI/YC4A115-T300 | | | | | |
| | | Emission standard | Stage3 | Stage3 | Stage3 | Stage3 | Stage3 | |
| | 7.2 | Engine power acc.to ISO 1585 | kW | 85 | 85 | 85 | 85 | |
| | 7.3 | Rated speed | r/min | 2200 | 2200 | 2200 | 2200 | |
| | 7.4 | No. of cylinders/displacement | (-)/(cm³) | 4/4836 | 4/4836 | 4/4836 | 4/4836 | |
| | 7.9 | Vehicle electrical system voltage | V | 24 | 24 | 24 | 24 | |
| | 7.10 | Battery voltage/nominal capacity | V/Ah | 2-12/90 | 2-12/90 | 2-12/90 | 2-12/90 | |
| | | Rated torque | N·m/r/min | 450/1600-1800 | 450/1600-1800 | 450/1600-1800 | 450/1600-1800 | |
| | | Transmissions Manufacturer | | China | China | China | China | |
| | | Transmissions Type | | Powershift | Powershift | Powershift | Powershift | |
| Addition data | 8.2 | Operating pressure for attachments | bar | 190 | 190 | 190 | 195 | |
| | 8.4 | Sound level at the driver's ear according to DIN 12053 | dB(A) | 89 | 89 | 89 | 89 | |
| | 8.5 | Towing coupling, type DIN | | Pin | Pin | Pin | Pin | |
| | | Hydraulic Tank - Capacity (drain & refill) | l | 120 | 120 | 120 | 160 | |
| | | Fuel Tank - Capacity (Gasoline or Diesel-Powered Units Only) | l | 150 | 150 | 150 | 180 | |

Optional Engine / Transmission

| Engine / Transmission | | Chaochai/CY6BG331 | ISUZU/6BG1QP | CUMMINS/QSB4.5 | CUMMINS/QSF3.8 |
|---------------------------------|-----------|-------------------|--------------|------------------|----------------|
| Engine manufacturer/type | | Chaochai/CY6BG331 | ISUZU/6BG1QP | CUMMINS/QSB4.5 | CUMMINS/QSF3.8 |
| Manufacturer's type designation | | G79 | W14 | W28 | W70 |
| Rated capacity/rated load | Q (kg) | 5000-10000 | 5000-10000 | 5000-10000 | 5000-10000 |
| Emission standard | | Stage3 | / | Stage IIIA/Tier3 | Stage IIIA |
| Engine power acc.to ISO 1585 | kW | 85 | 85.3 | 82 | 86 |
| Rated speed | r/min | 2200 | 2200 | 2200 | 2200 |
| No. of cylinders/displacement | (-)/(cm³) | 6/5785 | 6/6494 | 4/4500 | 4/3760 |
| Rated torque | N·m/r/min | 450/1400-1800 | 410.9/1500 | 488/1500 | 470/1100-1700 |
| Transmissions Manufacturer | | China | China | okamura | China |
| Transmissions Type | | Powershift | Powershift | Powershift | Powershift |
| Stage FWD/RVS | | 2/2 | 2/2 | 2/2 | 2/2 |



5.0-7.0t X Series Mast:(Penumatic)

| Type | Model | Max. fork height | Overall height | | | | Free lift | | Load distance, centre of drive axle to fork | Tilt range |
|----------------------------------|--------------|------------------|----------------|------------------|---------------|------------------|---------------|-------------|---|------------|
| | | | Lowered | Extended | | Without backrest | With backrest | | | |
| | | | | Without backrest | With backrest | | | | | |
| Wide view mast | CXR50/70M240 | 2400 | 2200 | 3405/3567 | 3547/3807 | 160 | 160 | 598.5/603.5 | 10/12 | |
| Free duplex wide-view mast | CXR50/70U250 | 2500 | 2185 | 3455/3615 | 3637 | 1230/1070 | 1048 | 625/630 | 10/12 | |
| Wide view full free Triplex mast | CXR50/70N360 | 3600 | 2200 | 4803 | 4997 | 997 | 803 | 672/677 | 10/12 | |

8.5-10t X Series Mast:(Penumatic)

| Type | Model | Max. fork height | Overall height | | | | Free lift | | Load distance, centre of drive axle to fork | Tilt range |
|----------------------------|------------|------------------|----------------|------------------|---------------|------------------|---------------|-----|---|------------|
| | | | Lowered | Extended | | Without backrest | With backrest | | | |
| | | | | Without backrest | With backrest | | | | | |
| Wide view mast | CXR100M200 | 2000 | 2060 | 3106 | / | 200 | / | 725 | 10/12 | |
| Free duplex wide-view mast | CXR100U210 | 2100 | 2180 | 3226 | / | 1050 | / | 725 | 10/12 | |

