

HEAVY LIFT
FORKLIFTS



Bobcat[®]

One Tough Animal.

LPG FORKLIFTS

NXP-Series, 2.0 to 3.5 ton capacity G20NXP / G25NXP / G30NXP / G33NXP / G35NXP



ONE TOUGH ANIMAL

OUR MISSION

We empower operators to accomplish more, while working in the toughest conditions and tightest situations. When our customers have the will, we provide the way.



INTRODUCTION

BOBCAT'S HISTORY

In 1958, Melroe Manufacturing Company introduced a compact front-end loader that evolved quickly into the M400, the world's first true skid steer loader. The company soon adopted what became the world-famous 'Bobcat' brand – and its success paved the way for the global compact equipment industry we know today.



YEARS OF EXPERIENCE

In 2021, Bobcat expanded its portfolio by acquiring Doosan Industrial Vehicle. This specialist in material handling equipment constructed its first forklift in 1968 and went on to establish a global presence with 400 dealers in 93 countries.



BOBCAT TODAY

Bobcat is expanding its portfolio with the addition of forklifts and reach trucks for the material handling industry. Offering a comprehensive line-up that will meet all your intralogistics needs. Bobcat forklifts and reach trucks are produced in our factory in Korea, while our premium quality warehouse equipment is made in Germany.



TOUGH, AGILE & SAFE



▶ UNMATCHED VALUE

The NXP Series combines entry-level accessibility with incredible power, durability, and operator comfort, promising outstanding value for your investment.

A spacious cab equipped with additional features for maximum comfort



Excellent visibility through the mast for safer and more efficient worksites
P7

Durable frame and mast for safer operation when carrying loads

Power shoe brakes for maximum productivity

Good roof visibility for enhanced operator vision while lifting
P7



New auxiliary weight for excellent stability and reduced vibration
P11

Anti-slip step plate for increased safety when getting in and out of your machine

Tool-less removable side panel and wide hood opening for easy maintenance

Reduced steering radius for improved maneuverability
P7



▶ TOP PERFORMANCE, ALL DAY LONG

Our fuel-efficient, powerful engines promise high-performance, all day long.
P 6-7

▶ CONFIDENCE IN COMFORT

Easily navigate longer shifts with confidence thanks to an intuitive instrument panel, adjustable seat, small steering wheel, and spacious cab.
P 8-9



▶ OUTSTANDING SAFETY

With safety features like a mast lowering interlock, vibrant LED lights, and a reliable parking brake, the operators can enjoy an even safer ride.
P 10-11



▶ BUILT TO LAST

Built for durability, the NXP Series delivers reliability through features like optimized airflow, engine protection, robust mast design, reduced vibrations, and anti-dust measures. Enjoy the power of Bobcat for years to come.
P 12-13



OUTSTANDING PRODUCTIVITY



REACH HIGHER, ACHIEVE MORE

Our improved gear pump and mast regulator value takes your truck to new heights, significantly increasing efficiency and productivity, especially in high-speed operations.



LIFT BIGGER

Get more stability with our new auxiliary weight. This feature lowers the truck's center of gravity, allowing it to lift bigger and stronger in heavy-duty applications.



NAVIGATE IMPOSSIBLE SPACES

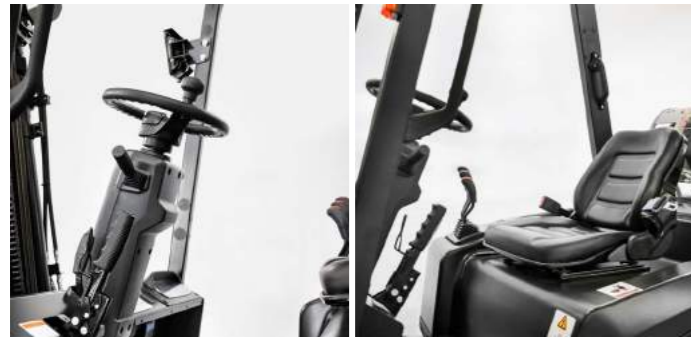
Enjoy working in places where others cannot! Thanks to a small turning radius, you can maneuver in and out of the tightest spots with ease.



ELEVATED PERFORMANCE

The combination of a robust engine, advanced transaxle, and innovative frame structure has optimized gradeability, allowing operators of the NXP-Series to confidently scale steep slopes of up to 25% grade.

COMFORT & CONTROLS



▶ MORE ACCESSIBILITY

Optimized for operator comfort and convenience, our cab design ensures efficient use of space, and a comfortable driving experience. Enjoy the benefits of a compact steering wheel, accompanied by an adjustable steering column and suspension seat.



▶ MORE LEGROOM

With more knee clearance and a relocated tilt cylinder, our trucks offer more leg space for enhanced comfort.



▶ EFFORTLESS CONTROL

A compact steering wheel with a knob makes it easy to maneuver, control, and operate.



▶ SIMPLIFIED OPERATION

The headlamp switches are seamlessly integrated for effortless operation.

▶ EASY ENTRY



Our trucks are designed with operator comfort in mind with low step height, an easy entry bar, and a step plate enhanced with anti-slip tread.

▶ ENHANCED COMFORT



For even more comfort, we've relocated the steering column to the left for a more natural posture, while the instrument panel has been shifted to the right for improved visibility.

▶ SEE MORE, WORK BETTER



By lowering the cowl height (-40 mm) and tweaking the counterweight design, our NXP Series offers improved front and rear end visibility for safer driving conditions.



SAFETY IN EVERY MOVE

▶ SAFETY AT EVERY TURN

Operate the truck with complete confidence thanks to the remarkable visibility through an expanded mast window, strategically repositioned hydraulic hoses, and a reduced cowl height. Safeguard operations with features like a mast lowering interlock, vibrant LED lights, and a reliable parking brake, while operators enjoy an even safer ride with optional blue safety lights, zone lights, and a rearview camera.

▶ OPERATOR SENSING SYSTEM (OSS)

The truck's travel and mast lifting functions stop when the operator leaves the seat so the forklift won't perform any unintended movements.



▶ A MORE SECURE WORKPLACE

When the operator leaves the truck unattended, the hydraulic locking system prevents unintentional lowering and tilting of the mast. This keeps the truck, load, and jobsite safe.



▶ PEDESTRIAN ALERTS

The blue safety light projects onto the floor around the truck, alerting pedestrians to the approaching vehicle.



▶ SAFETY ZONES

The vehicle projects red zone light onto the ground, marking a safe area for pedestrians in close proximity to the vehicle.



▶ BACKUP ALARM

While traveling in reverse, the backup alarm sounds to warn people in the vicinity of the approaching truck, making the workplace safer for everyone.



▶ PARKING BRAKE ALERT

Prioritize operator safety and safeguard against accidental movement with our parking brake warning system.



▶ A PANORAMIC VIEW

Providing greater visibility of the rear working area, the large panoramic mirror improves safety while adding to overall productivity.



▶ ILLUMINATE YOUR WORKPLACE

The LED lights illuminate even the darkest corners of your workplace, keeping you safe and aware of your surroundings.



BUILT TO LAST

▶ NO JOB TOO TOUGH

Made for robust performance in heavy-duty and dusty environments, this truck offers anti-dust design, pre-cleaner, and double filter. It also boasts features like a protective belly plate, vented side panels, engine guard, and heavy-duty cooling for optimal functionality.



The reinforced ribs (J-channel) of the mast beam improve mast stiffness and lateral stability

A wide hood opening with locking cylinders and a tool-less removable side panel for easy access

Withstand the harshest conditions with the optional vented side panels, belly plate, pre-cleaner, and radiator screen.

Outstanding stability and reduced vibrations thanks to the newly redesigned auxiliary weight **P11**

Centralized electronic components for easier maintenance and reduced downtime

THERE'S NO TIME FOR DOWNTIME. STAND UP TO EVERY TASK THAT COMES YOUR WAY, DAY AFTER DAY.



▶ EXTENSIVE DEALER NETWORK

You will receive the best after-sales service from your authorized local or national factory-trained dealer, backed by Bobcat's own customer service center. And Bobcat provides 100% parts inventory to insure any downtime is minimized. When you own a Bobcat forklift, our high quality, responsive customer support team comes with it.

▶ BOBCAT GENUINE PARTS

Quality components delivered to our dealers guarantee that all of our equipment is built to last, withstand the toughest conditions and provide reliable performance.

MAIN SPECIFICATIONS

MAIN SPECIFICATIONS						
		G20NXP	G25NXP	G30NXP	G33NXP	G35NXP
Fuel : Diesel, LPG, DF				LPG		
Emission Regulation				Euro Stage V		
Load capacity	kg	2000	2500	3000	3300	3500
Load Center	mm	500	500	500	500	500
Load distance, centre of drive axle to fork	mm	462	462	462	467	467
Wheelbase	mm	1700	1700	1700	1700	1750
Height, Mast lowered	mm	2045	2045	2045	2045	2045
Free lift	mm	150	150	150	150	150
Lift (with STD 2-stage mast)	mm	3000	3000	3000	3000	3000
Height, Mast Extended	mm	4247	4247	4247	4252	4252
Height of Overhead Guard(Cabin)	mm	2160	2160	2160	2160	2160
Height of Seat	mm	1185	1185	1185	1185	1185
Overall Length	mm	3610	3660	3715	3780	3800
Length to Forkface	mm	2560	2610	2665	2730	2750
Overall Width	mm	1290	1290	1290	1290	1290
Turning radius	mm	2300	2350	2430	2450	2500

MAIN SPECIFICATIONS						
		G20NXP	G25NXP	G30NXP	G33NXP	G35NXP
Fuel : Diesel, LPG, DF				LPG / DF		
Emission Regulation				Non-certi		
Load capacity	kg	2000	2500	3000	3300	3500
Load Center	mm	500	500	500	500	500
Load distance, centre of drive axle to fork	mm	462	462	462	467	467
Wheelbase	mm	1700	1700	1700	1700	1750
Height, Mast lowered	mm	2045	2045	2045	2045	2045
Free lift	mm	150	150	150	150	150
Lift (with STD 2-stage mast)	mm	3000	3000	3000	3000	3000
Height, Mast Extended	mm	4247	4247	4247	4252	4252
Height of Overhead Guard(Cabin)	mm	2160	2160	2160	2160	2160
Height of Seat	mm	1185	1185	1185	1185	1185
Overall Length	mm	3610	3660	3715	3780	3800
Length to Forkface	mm	2560	2610	2665	2730	2750
Overall Width	mm	1290	1290	1290	1290	1290
Turning radius	mm	2300	2350	2430	2450	2500

Specification values quoted in this specification sheet have been rounded. Performance may vary depending on operating conditions. Products and specifications are subject to improvement and change without prior notice.

STANDARD EQUIPMENT & OPTIONS

STANDARD EQUIPMENT & OPTIONS	
SAFETY & STABILITY	
Operating Sensing System (OSS)	✓
Back-up alarm – inside	✓
Control valve with hydraulic locking	✓
Rear safety light(s)	•
Rear grab handle with horn switch	•
Static ground strap	•
Strobe light	•
Autoshift controller	•
Ground speed control	•
Spark arrestor	•
Red or blue fence (zone) lights	•
PRODUCTIVITY	
Auxiliary weight	✓
Power shoe brakes	✓
High-powered, fuel-efficient engine	✓
Quick Disconnect Hose Couplings	✓
RELIABILITY	
Mast with JJ beam	✓
Anti dust overhead guard	✓
Single (NX) or dual element air cleaner (NXP)	✓
Increased fan ratio	✓
Bottom frame protection	✓
Horizontal inside exhaust muffler	✓
Pre-cleaner	•

STANDARD EQUIPMENT & OPTIONS	
SERVICEABILITY	
Toolless side panel	✓
Toolless floor plate	✓
Hood locking cylinder	✓
Junction box	–
Separate brake oil reservoir with indicator	✓
Tool kit	•
OPERATOR COMFORT (ERGONOMICS)	
Clear front/rear mast visibility	✓
LED combination lights	✓
Entry grab bar	✓
Anti-slip step plate	✓
Panoramic mirror	✓
Integrated lamp switch	✓
Compact steering wheel with steering knob	✓
Clip board	✓
Modular cabin – Type A,B,C	•
Full cabin (with heater & air conditioner)	•
Cup holder	•
USB port	•
Fuel cap with key	–
Operator fan	•

*This list is based on factory data. Standard or optional can vary for specific countries.

• = option ✓ = standard – = not available



Compact steering wheel with steering knob



Anti-slip step plate



LED combination lights



Auxiliary weight



Quick disconnect hose couplings



Clipboard

YOUR TRUSTED BUSINESS PARTNER

Your machine builds your business and reputation. Everything we put into Bobcat equipment is designed to make this possible. Strength, versatility, or agility, it's built around you.



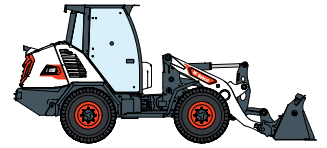
340 MACHINES / 46 PRODUCT FAMILIES / 1 TOUGH ANIMAL



SKID-STEER LOADERS



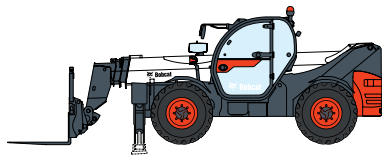
COMPACT TRACK LOADERS



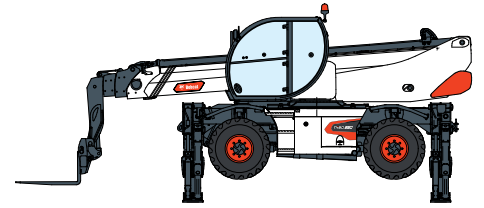
COMPACT WHEEL LOADERS



FORKLIFTS



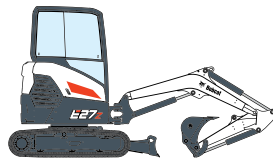
TELEHANDLERS



ROTARY TELEHANDLERS



LIGHT COMPACTION EQUIPMENT



COMPACT EXCAVATORS



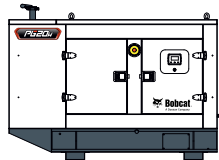
COMPACT TRACTORS



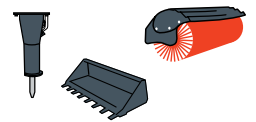
SMALL ARTICULATED LOADERS



MINI TRACK LOADER



PORTABLE POWER



ATTACHMENTS

HEAVY LIFT FORKLIFTS



Bobcat®

DOOSAN

Bobcat is a Doosan Company. Doosan is a global leader in construction equipment, power & water solutions, engines, and engineering proudly serving customers and communities for more than a century. | Bobcat and the Bobcat logo are registered trademarks of Bobcat Company in the United States and various other countries. ©Bobcat Company. All Rights Reserved.

Doosan Bobcat Korea Co., Ltd.